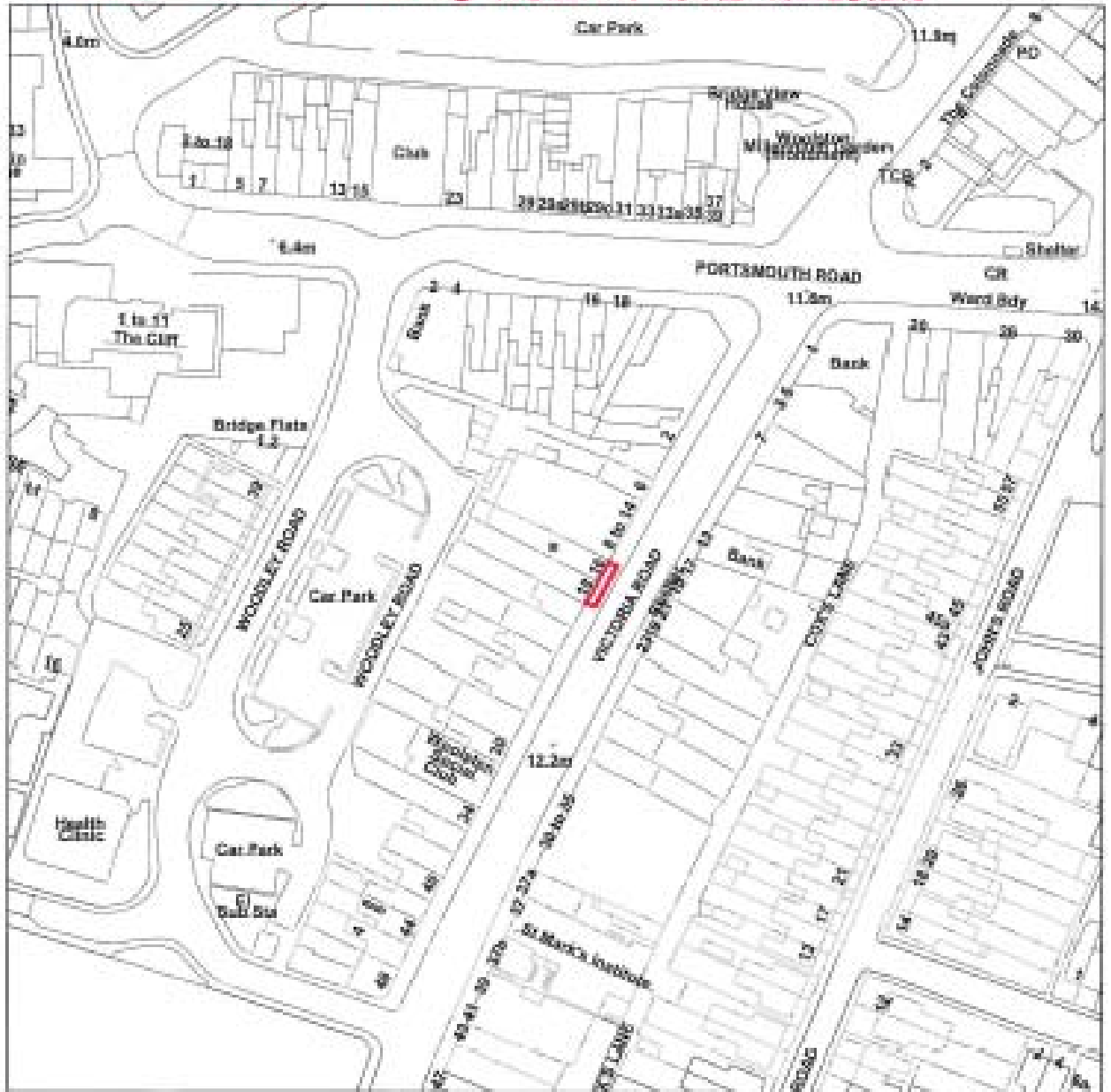


PANEL REPORT 16.10.2012

S.102 ORDER 16-18 VICTORIA ROAD WOOLSTON



0m 0.02 0.04 0.06 0.08 0.1 0.12

16-18 Victoria Road Woolston



3.12.2011

16-18 Victoria Road Woolston



16-18 Victoria Road Woolston



16-18 Victoria Road Woolston



16-18 Victoria Road Woolston



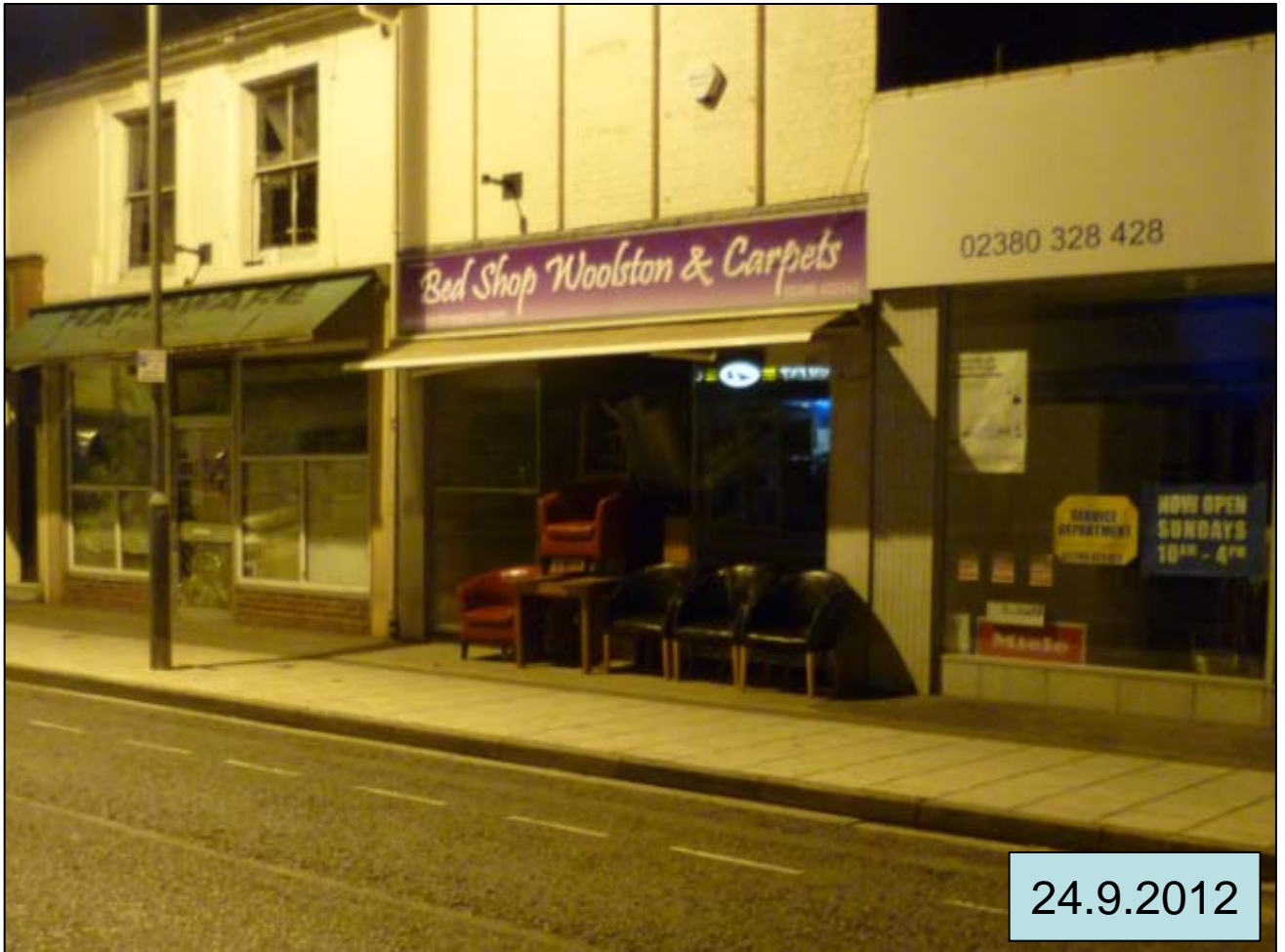
4.9.2012

16-18 Victoria Road Woolston



4.9.2012

16-18 Victoria Road Woolston



16-18 Victoria Road Woolston



21.9.2012

16-18 Victoria Road Woolston

20.9.2012

